

EOT Crane Specification (minimum) - Inside GIS Hall	
Capacity	Min 10.0T
Type	RADIO Controlled with remote
HOISIT Lifting Speed	0.315 to 3.15MPM step less speed through VVVF AC Drive
C.T Speed	1.6 to 16 MPM step less speed through VVVF AC Drive
L.T Speed	2 to 20 MPM step less speed through VVVF AC Drive

TRANSFORMER CONNECTION  
INTERFACE ACCORDING IEC 62271-306, 1HC0036270 REV AF

- NOTES
- ALL DIMENSIONS ARE IN MILLIMETRES UNLESS OTHERWISE NOTED.
  - CIVIL DETAILS (DOORS/ STAIRS/ ) AND STEEL STRUCTURE ON THIS DRAWING ARE FOR INFORMATION ONLY. FOR DETAILS REFER TO RELEVANT DRAWINGS.
  - CIVIL CONTRACTOR SHOULD INFORM ABB ABOUT OTHER INSTALLATION (SUCH AS AIR CONDITIONING, LIGHTING, PANELS, ETC) IN GIS HALL, IN ORDER TO AVOID COLLISION WITH GIS/ GIS SUPPORT STRUCTURES.
  - ALL CIRCUIT BREAKERS ARE EQUIPPED WITH 3 DRIVES FOR 3 PHASES.
  - ALL DISCONNECTOR & EARTHING SWITCHES ARE EQUIPPED WITH 1 DRIVE FOR 3 PHASES UNLESS OTHERWISE STATED.
  - EACH GAS COMPARTMENT IS EQUIPPED WITH A GAS VALVE, A DENSITY MONITOR AND A PRESSURE RELIEF DEVICE.
  - ALL THE CIVIL INPUTS PERTAINING TO GIS WILL BE INDICATED IN SEPARATE DRAWING NAMED 'CIVIL WORK REQUIREMENTS'.
  - ALL THE DETAILS OF THE SUPPORT STRUCTURE & ASSOCIATED FOOTING PERTAINING TO GIS WILL BE INDICATED IN SEPARATE DRAWING NAMED 'SUPPORT LAYOUT'. HOWEVER FREE SPACE REQUIRED FOR GIS SUPPORT STRUCTURE IS INDICATED IN THE DRAWING AND IT SHOULD BE ENSURED THAT THIS SPACE IS NOT UTILIZED FOR ANY OTHER INSTALLATION.
  - ALL THE DETAILS OF GIS EARTHING & ITS ASSOCIATED STRUCTURE EARTHING WILL BE INDICATED IN SEPARATE DRAWING NAMED 'EARTHING LAYOUT'.

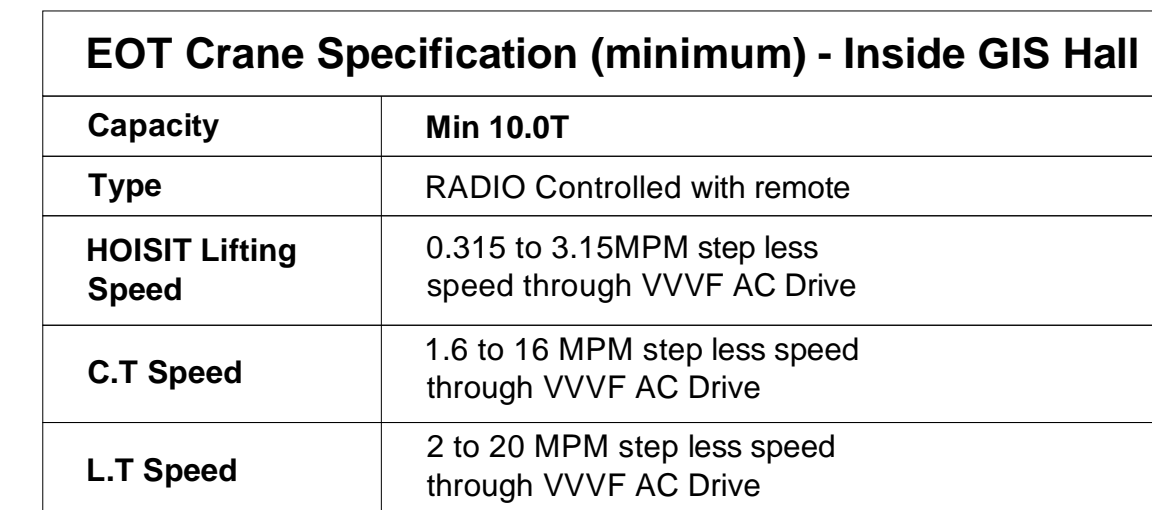
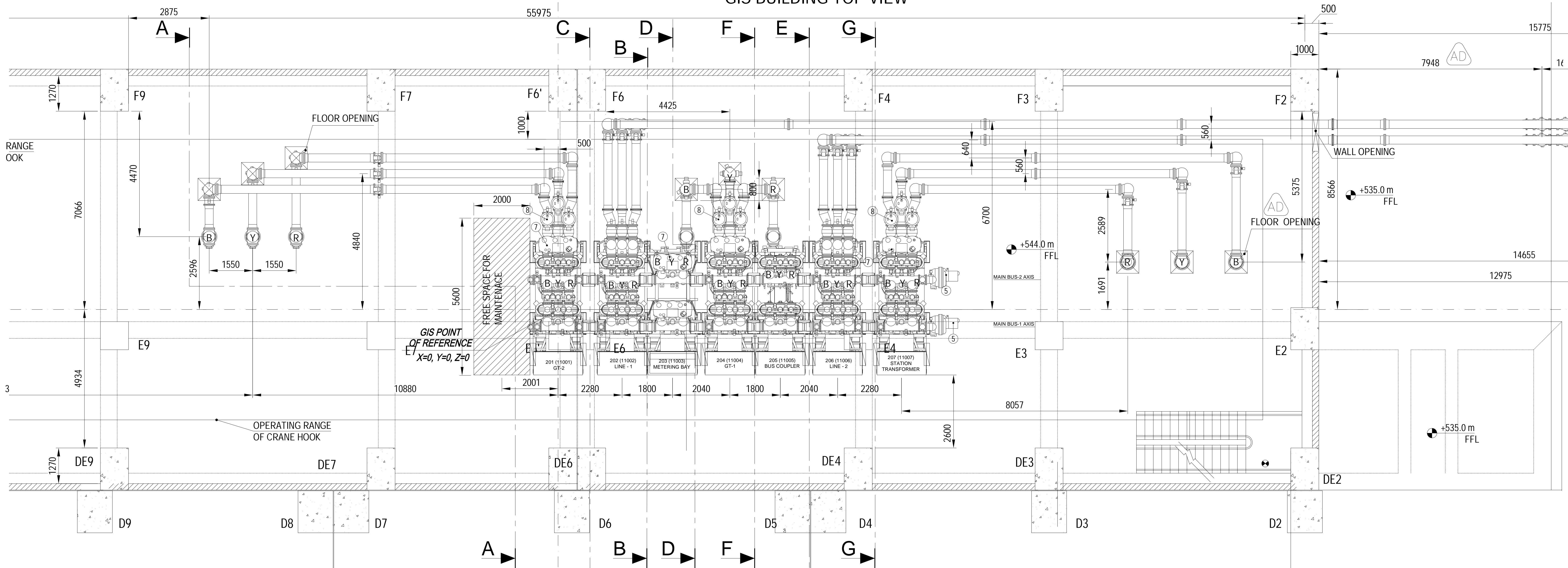
LEGEND	
1	- CIRCUIT BREAKER
2	- DISCONNECTOR
3	- DISCONNECTOR & EARTHING SWITCH
4	- MAINTENANCE EARTHING SWITCH
5	- HIGH SPEED EARTHING SWITCH
6	- CURRENT TRANSFORMER
7	- VOLTAGE TRANSFORMER
8	- SURGE ARRESTER
9	- SFA TO AIR BUSHING
10	- CABLE END BOX
11	- TRANSFORMER CONNECTION
12	- LOCAL CONTROL CUBICLE (LCC)
13	- LATERAL DISMANTLING UNIT
14	- COMPENSATOR

REFERENCE DOCUMENTS		
DOCUMENT TITLE	ABB DOCUMENT NO.	CLIENT DOCUMENT NO.
PROJECT SPECIFIC GIS PARAMETERS	1HYGR00036-6	-
SINGLE LINE GAS DIAGRAM	1HYGR00036-1	-
CIVIL WORK REQUIREMENTS	1HYGR00036-3	-
CIVIL GUIDELINES PLAN AT EL 535.	-	12000019676_Rev07
CROSS-SECTION OF POWER HOUSE	-	12000019651_Rev12
GT BLOCK DIAGRAM	-	24580050501_Rev00
ST OUT LINE GENERAL ARRGT.	-	14580050322_Rev00

AD	2019-07-06	DHRUVI S	LINE 1 AND LINE 2 BUS DUCT ROUTING MODIFIED
AC	2019-05-14	BHAVIN S	ST PHASE SEQUENCE, GT AND BUSHING TERMINATION MODIFIED
AB	2019-04-02	BHAVIN S	BUSDUCT ROUTING & BAY SEQUENCE MODIFIED
AA	2018-10-26	BHAVIN S	FIRST ISSUE
REV	DATE	NAME	MODIFICATION

CLIENT:	M/S BHARAT HEAVY ELECTRICAL LIMITED
END CUSTOMER:	UTTARAKHAND JAL VIDHYUT NIGAM LIMITED (UJVNL)
PROJECT:	220 kV GIS for 2 x 60 MW VYASI HEP AT VYASI, DIST DEHRADHUN, UK
NOA No:	136/E & M DESIGN-VVY-EPC(6) (FOR SUPPLY) dt 15.04.2014 & 137/E & M DESIGN-VVY-EPC(6) (FOR SERVICES) dt 15.04.2014
BHEL Doc No:	TB-3-398-316-102

Draft	06.07.2019	DHRUVI S	Derived from:	Separate BOM:	Scale:	1:85	Doc type	DW1	Format	A0	
Approved	06.07.2019	DEBASISH M	Replaces:	SF6 SWITCHGEAR ELK-14-245C						Language	EN
Released	06.07.2019	DHRUVI S	Responsible department:	220 kV GIS for 2 x 60 MW VYASI HEP.						No. Sheets	006
Order number:	3100094055		Revision:	TOPVIEW - GIS LAYOUT						Sheet no.	001
			AD	GIS LAYOUT & REQUIREMENTS						Document number:	1HYG900036-2
<b>ABB</b>			ABB India Ltd under license of ABB Technology Ltd								

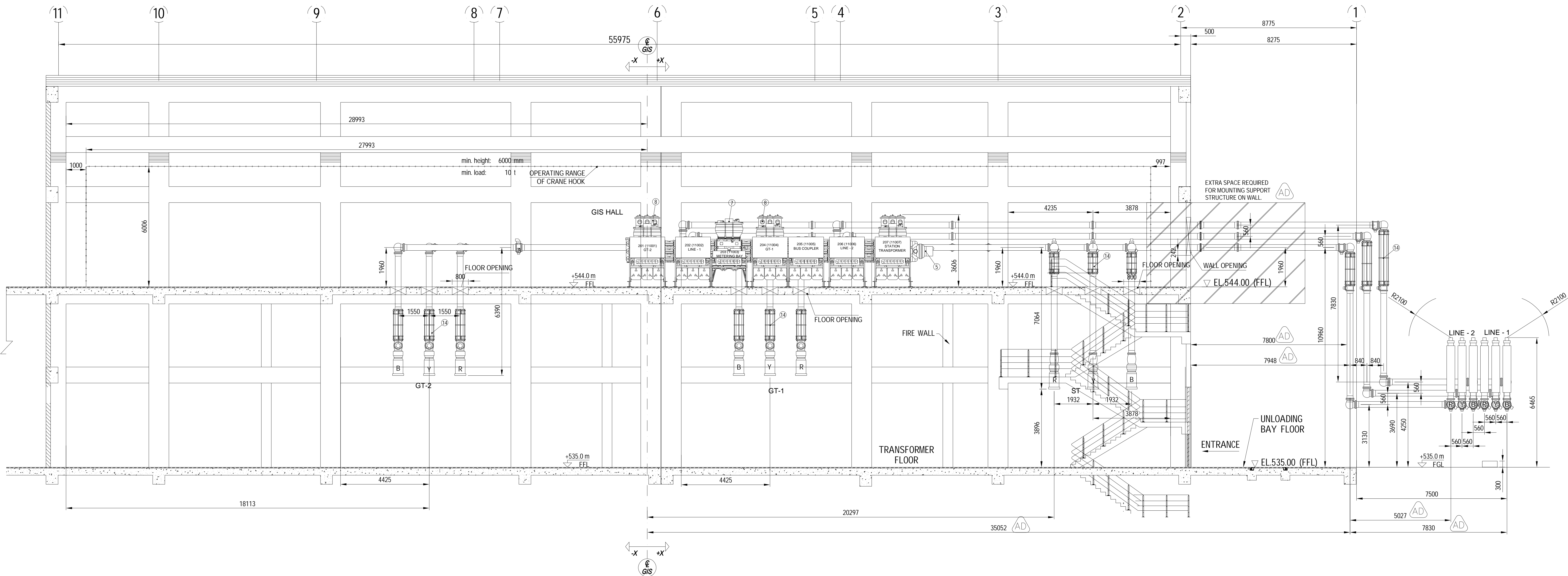


## NOTES

1. ALL DIMENSIONS ARE IN MILLIMETRES UNLESS OTHERWISE NOTED.
2. CIVIL DETAILS (DOORS/ STAIRS / ) AND STEEL STRUCTURE ON THIS DRAWING ARE FOR INFORMATION ONLY. FOR DETAILS REFER TO RELEVANT DRAWINGS.
3. CIVIL CONTRACTOR SHOULD INFORM ABB ABOUT ANY OTHER INSTALLATION (SUCH AS AIR CONDITIONING, LIGHTING, PANELS, ETC) IN GISH HALL, IN ORDER TO AVOID COLLISION WITH GFS / GIS SUPPORT STRUCTURES.
4. ALL CIRCUIT BREAKERS ARE EQUIPPED WITH 3 DRIVES FOR 3 PHASES.
5. ALL DISCONNECTOR & EARTHING SWITCHES ARE EQUIPPED WITH 1 DRIVE FOR 3 PHASES UNLESS OTHERWISE STATED.
6. EACH GAS COMPARTMENT IS EQUIPPED WITH A GAS VAPOR, A DENSITY MONITOR AND A PRESSURE RELIEF DEVICE.
7. ALL THE CIVIL INPUTS PERTAINING TO GVS WILL BE INDICATED IN SEPARATE DRAWING NAMED "CIVIL WORK REQUIREMENTS".
8. ALL THE DETAILS OF THE SUPPORT STRUCTURE & ASSOCIATED FOOTING PERTAINING TO GVS WILL BE INDICATED IN SEPARATE DRAWING NAMED "SUPPORT LAYOUT". HOWEVER FREE SPACE FOR THE CIVIL SUPPORT STRUCTURE IS INDICATED IN THE FOOTING LAYOUT AND IT SHOULD BE ENSURED THAT THIS SPACE IS NOT UTILIZED FOR ANY OTHER INSTALLATION.
9. ALL THE DETAILS OF GAS EARTHING & ITS ASSOCIATED STRUCTURE EARTHING WILL BE INDICATED IN SEPARATE DRAWING NAMED "EARTHING LAYOUT".

REFERENCE DOCUMENTS		
DOCUMENT TITLE	ABB DOCUMENT NO.	CLIENT DOCUMENT NO.
PROJECT SPECIFIC GIS PARAMETERS	1HYG900036-6	-
SINGLE LINE GAS DIAGRAM	1HYG900036-1	-
CIVIL WORK REQUIREMENTS	1HYG900036-3	-
CIVIL GUIDELINE'S PLAN AT EL.535.	-	12000019676_Rvw07
CROSS-SECTION OF POWER HOUSE	-	12000019651_Rvw12
GT BLOCK DIAGRAM	-	24580050501_Rvw00
ST OUT LINE GENERAL ARRGT.	-	14580050332_REV00

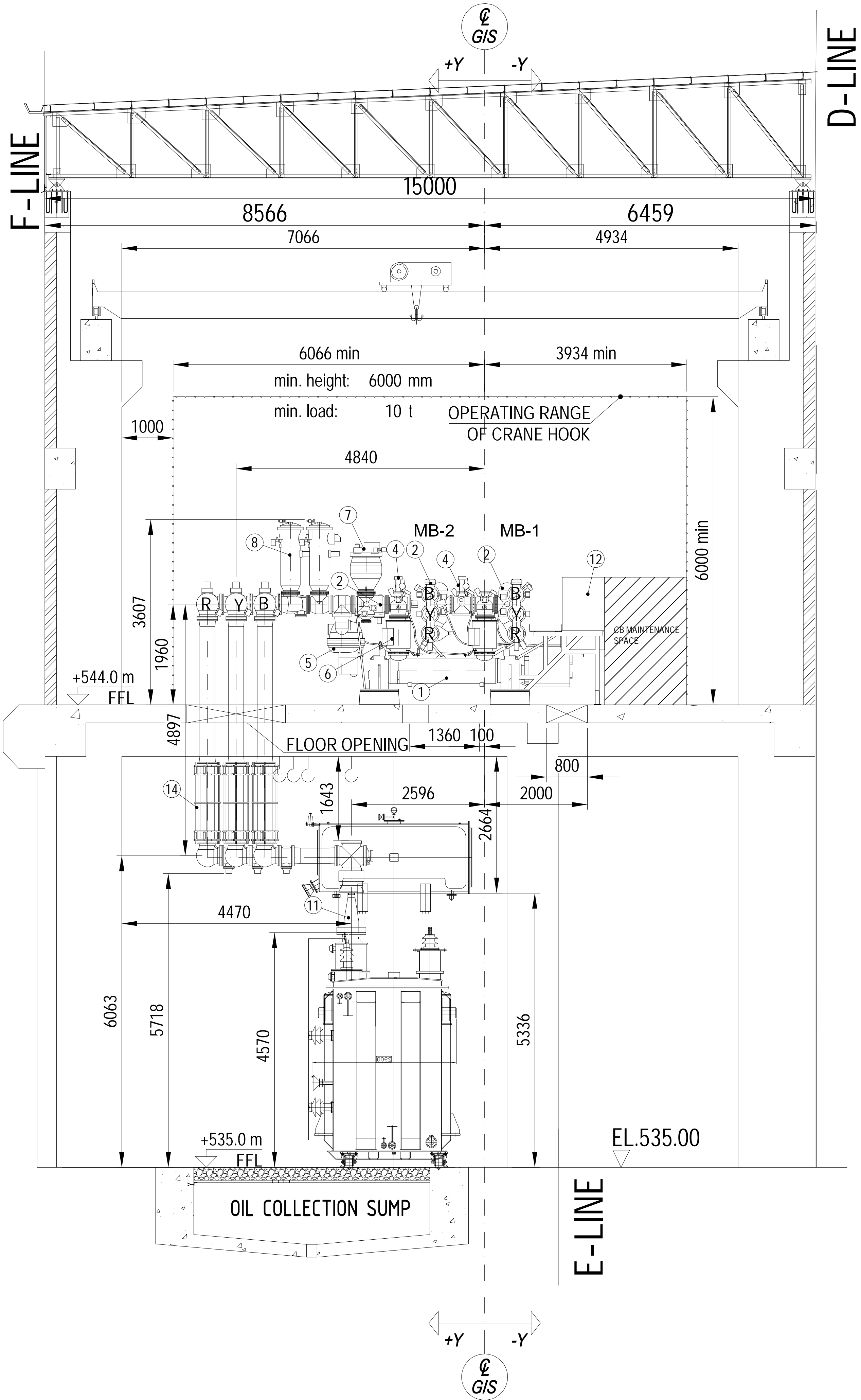
CLIENT:	M/S BHARAT HEAVY ELECTRICAL LIMITED
END CUSTOMER:	UTTARAKHAND JAL VIDHYUT NIGAM LIMITED (UJVNL)
PROJECT:	220 KV GIS for 2 x 60 MW VYASI HEP AT VYASI, DIST DEHRADHUN, U
NOA No:	136/E & M DESIGN-JVY-EP(C) (FOR SUPPLY) dt 15.04.2017 & M DESIGN-JVY-EP(C) (FOR SERVICES) dt15.04.2017
BHEL Doc No:	TB-3-398-316-102



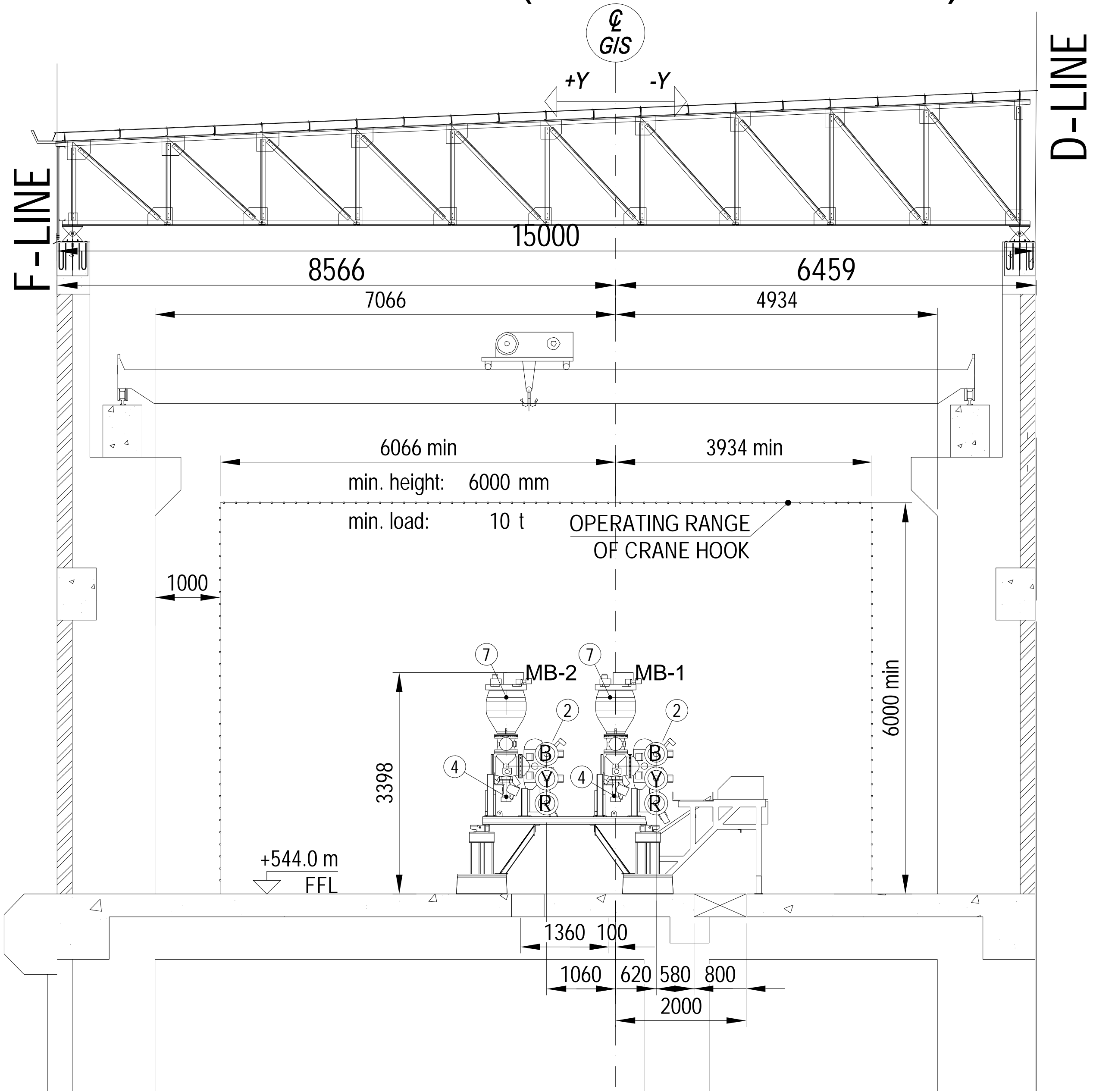
1HYG900036-2



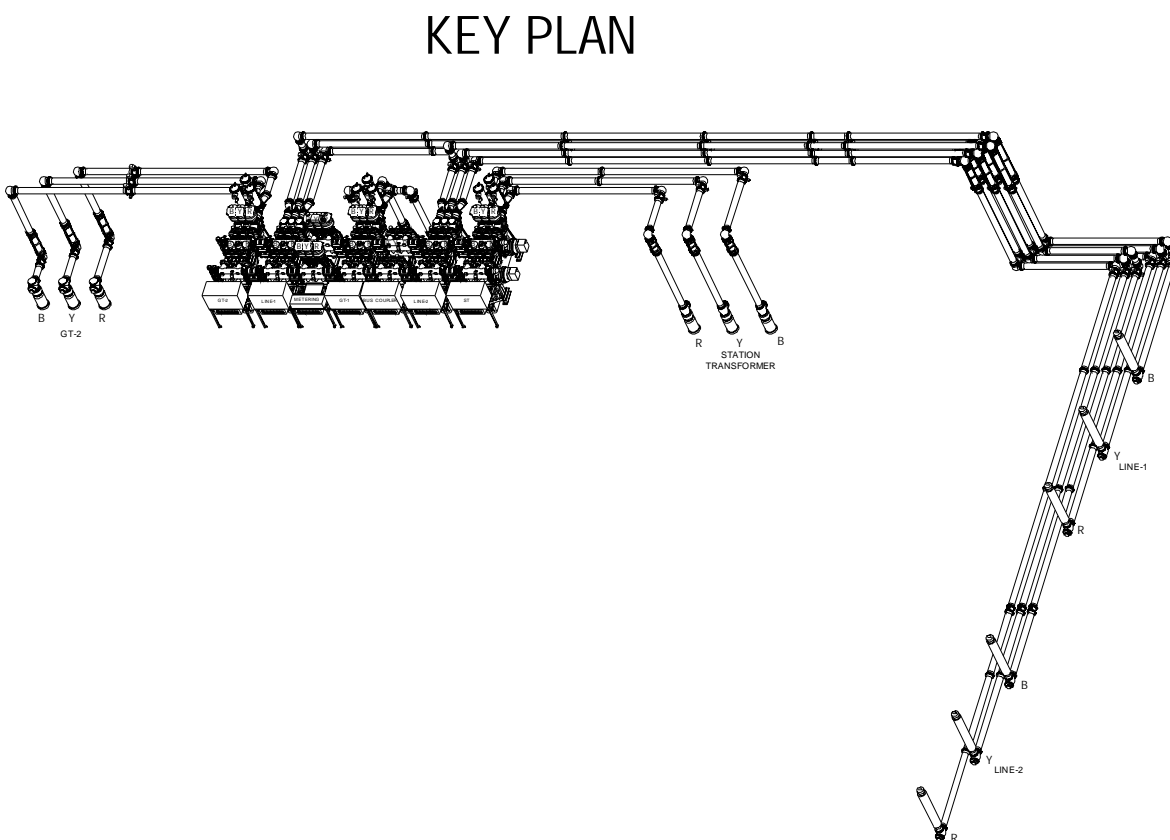
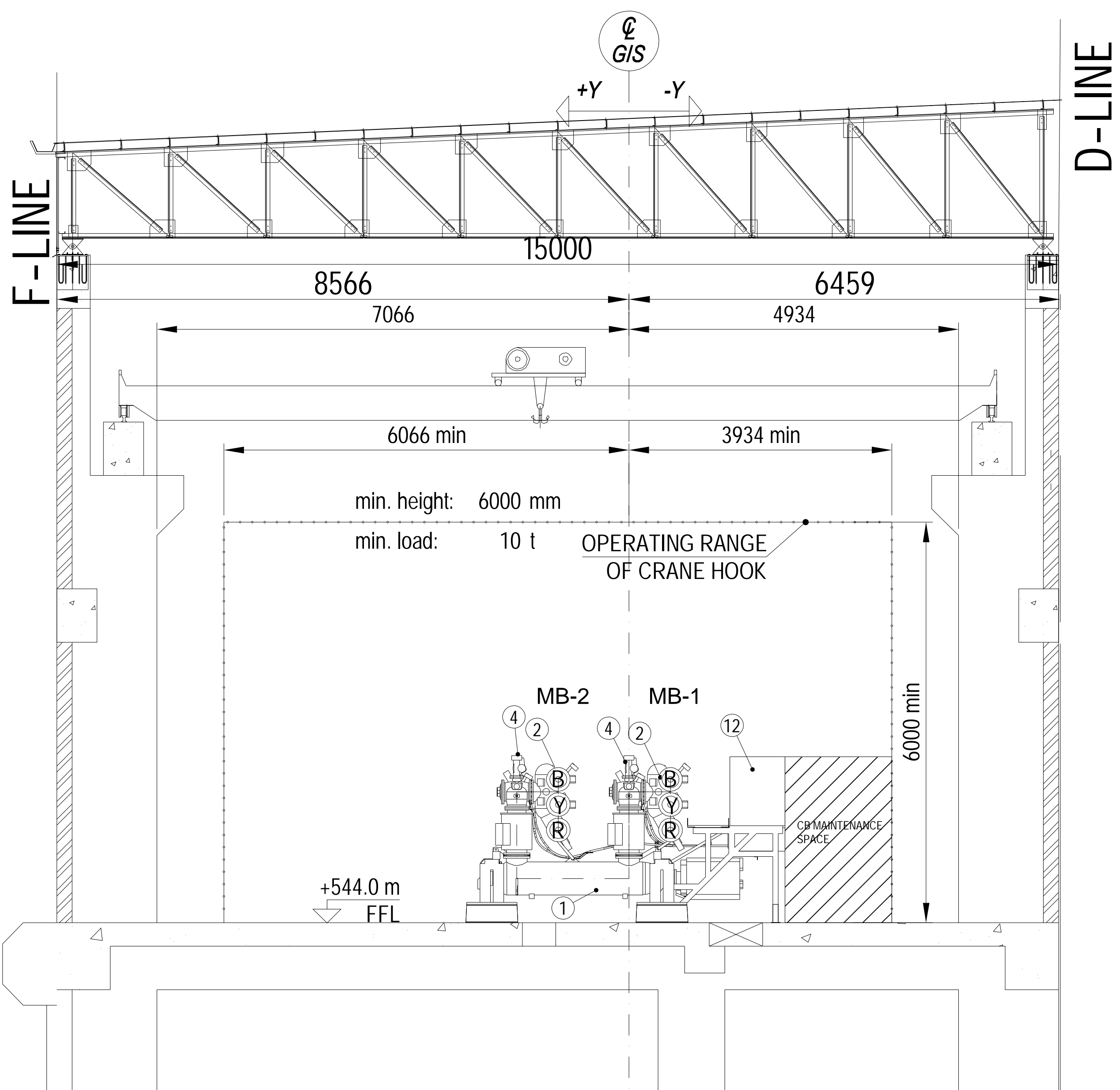
SECTION A-A (GT-2 BAY)



SECTION B-B (METERING BAY)



SECTION F-F (BUS COUPLER BAY)



EOT Crane Specification (minimum) - Inside GIS Hall	
Capacity	Min 10.0T
Type	RADIO Controlled with remote
HOISIT Lifting Speed	0.315 to 3.15MPM step less speed through VVVF AC Drive
C.T Speed	1.6 to 16 MPM step less speed through VVVF AC Drive
L.T Speed	2 to 20 MPM step less speed through VVVF AC Drive

TRANSFORMER CONNECTION  
INTERFACE ACCORDING IEC 62271-306, 1HC0036270 REV AF

- NOTES
- ALL DIMENSIONS ARE IN MILLIMETRES UNLESS OTHERWISE NOTED.
  - CIVIL DETAILS (DOORS, STAIRS, LIFT AND STEEL STRUCTURE ON THIS DRAWING ARE FOR INFORMATION ONLY. FOR DETAILS REFER TO RELEVANT DRAWINGS.
  - CIVIL CONTRACTOR SHOULD INFORM ABB ABOUT OTHER INSTALLATION (SUCH AS AIR CONDITIONING, LIGHTING, PANELS, ETC) IN GIS HALL, IN ORDER TO AVOID COLLISION WITH GIS / GIS SUPPORT STRUCTURES.
  - ALL CIRCUIT BREAKERS ARE EQUIPPED WITH 3 DRIVES FOR 3 PHASES.
  - ALL DISCONNECTOR & EARTHING SWITCHES ARE EQUIPPED WITH 1 DRIVE FOR 3 PHASES UNLESS OTHERWISE STATED.
  - EACH GAS COMPARTMENT IS EQUIPPED WITH A GAS VALVE, A DENSITY MONITOR AND A PRESSURE RELIEF DEVICE.
  - ALL THE CIVIL INPUTS PERTAINING TO GIS WILL BE INDICATED IN SEPARATE DRAWING NAMED "CIVIL WORK REQUIREMENTS".
  - ALL THE DETAILS OF THE SUPPORT STRUCTURE & ASSOCIATED FOOTING PERTAINING TO GIS WILL BE INDICATED IN SEPARATE DRAWING NAMED "SUPPORT LAYOUT". HOWEVER FREE SPACE REQUIRED FOR GIS SUPPORT STRUCTURE IS INDICATED IN THE DRAWING AND IT SHOULD BE ENSURED THAT THIS SPACE IS NOT UTILIZED FOR ANY OTHER INSTALLATION.
  - ALL THE DETAILS OF GIS EARTHING & ITS ASSOCIATED STRUCTURE EARTHING WILL BE INDICATED IN SEPARATE DRAWING NAMED "EARTHING LAYOUT".

LEGEND	
1	CIRCUIT BREAKER
2	DISCONNECTOR
3	DISCONNECTOR & EARTHING SWITCH
4	MAINTENANCE EARTHING SWITCH
5	HIGH SPEED EARTHING SWITCH
6	CURRENT TRANSFORMER
7	VOLTAGE TRANSFORMER
8	SURGE ARRESTER
9	SFA TO AIR BUSHING
10	CABLE END BOX
11	TRANSFORMER CONNECTION
12	LOCAL CONTROL CUBICLE (LCC)
13	LATERAL DISMANTLING UNIT
14	COMPENSATOR

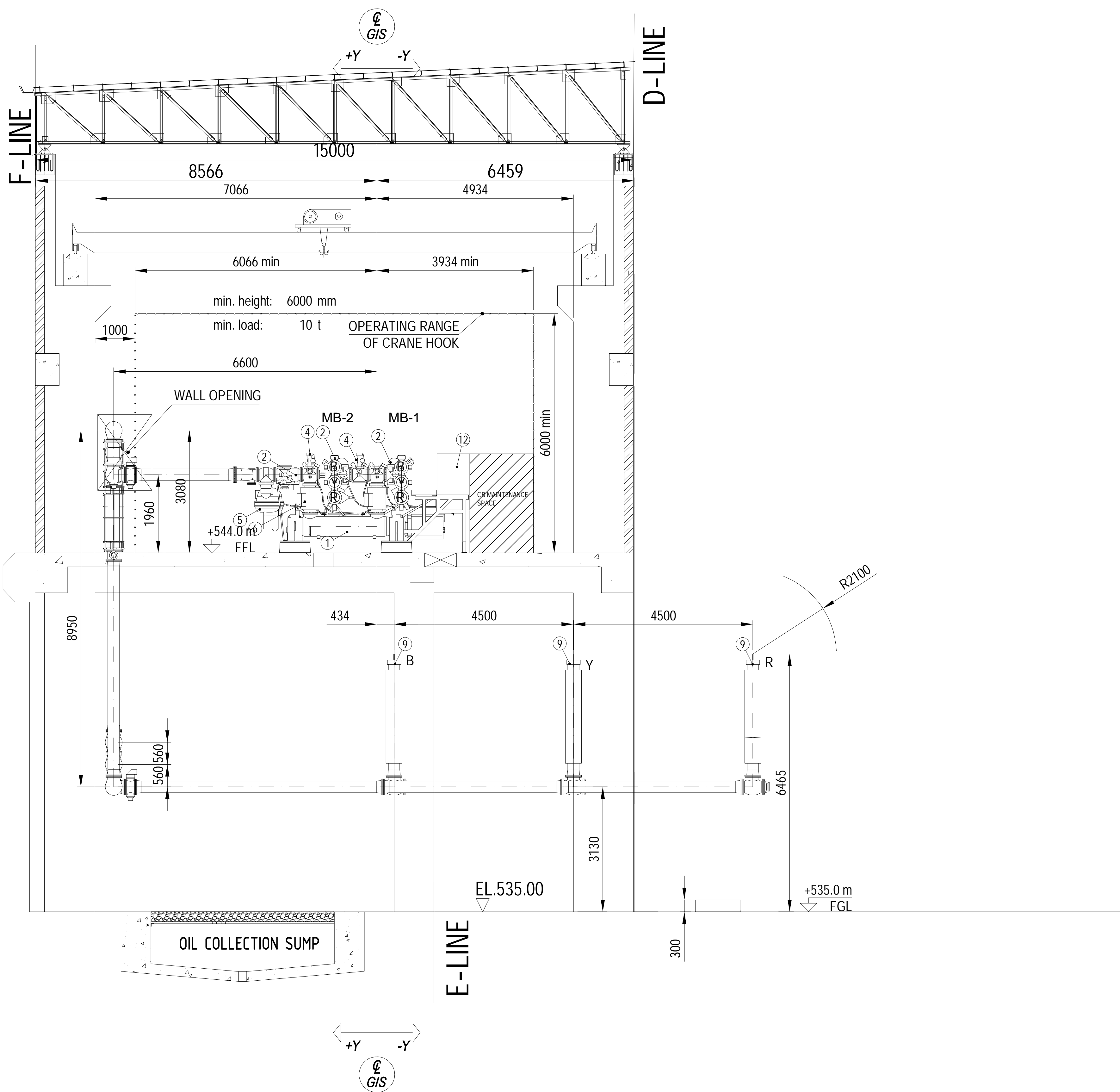
REFERENCE DOCUMENTS		
DOCUMENT TITLE	ABB DOCUMENT NO.	CLIENT DOCUMENT NO.
PROJECT SPECIFIC GIS PARAMETERS	1HYG000036-6	-
SINGLE LINE GAS DIAGRAM	1HYG000036-1	-
CIVIL WORK REQUIREMENTS	1HYG000036-3	-
CIVIL GUIDELINES PLAN AT EL.535.	-	12000019676_Rev07
CROSS-SECTION OF POWER HOUSE	-	12000019651_Rev12
GT BLOCK DIAGRAM	-	24580050501_Rev00
ST OUT LINE GENERAL ARRGT.	-	14580050332_Rev00

AD	2019-07-06	DHRUVI S	LINE-1 AND LINE-2 BUS DUCT ROUTING MODIFIED
AC	2019-05-14	BHAVIN S	ST PHASE SEQUENCE, GT AND BUSHING TERMINATION MODIFIED
AB	2019-04-02	BHAVIN S	BUSDUCT ROUTING & BAY SEQUENCE MODIFIED
AA	2018-10-26	BHAVIN S	FIRST ISSUE
REV	DATE	NAME	MODIFICATION

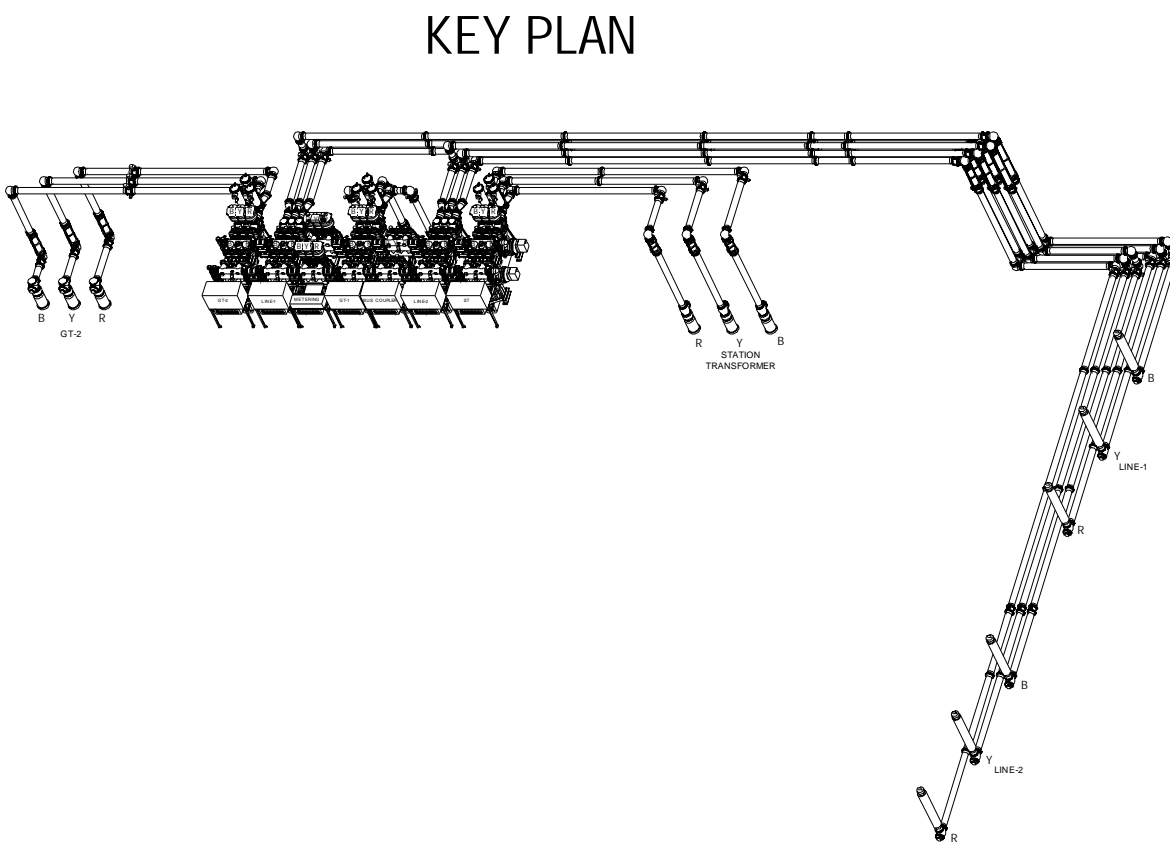
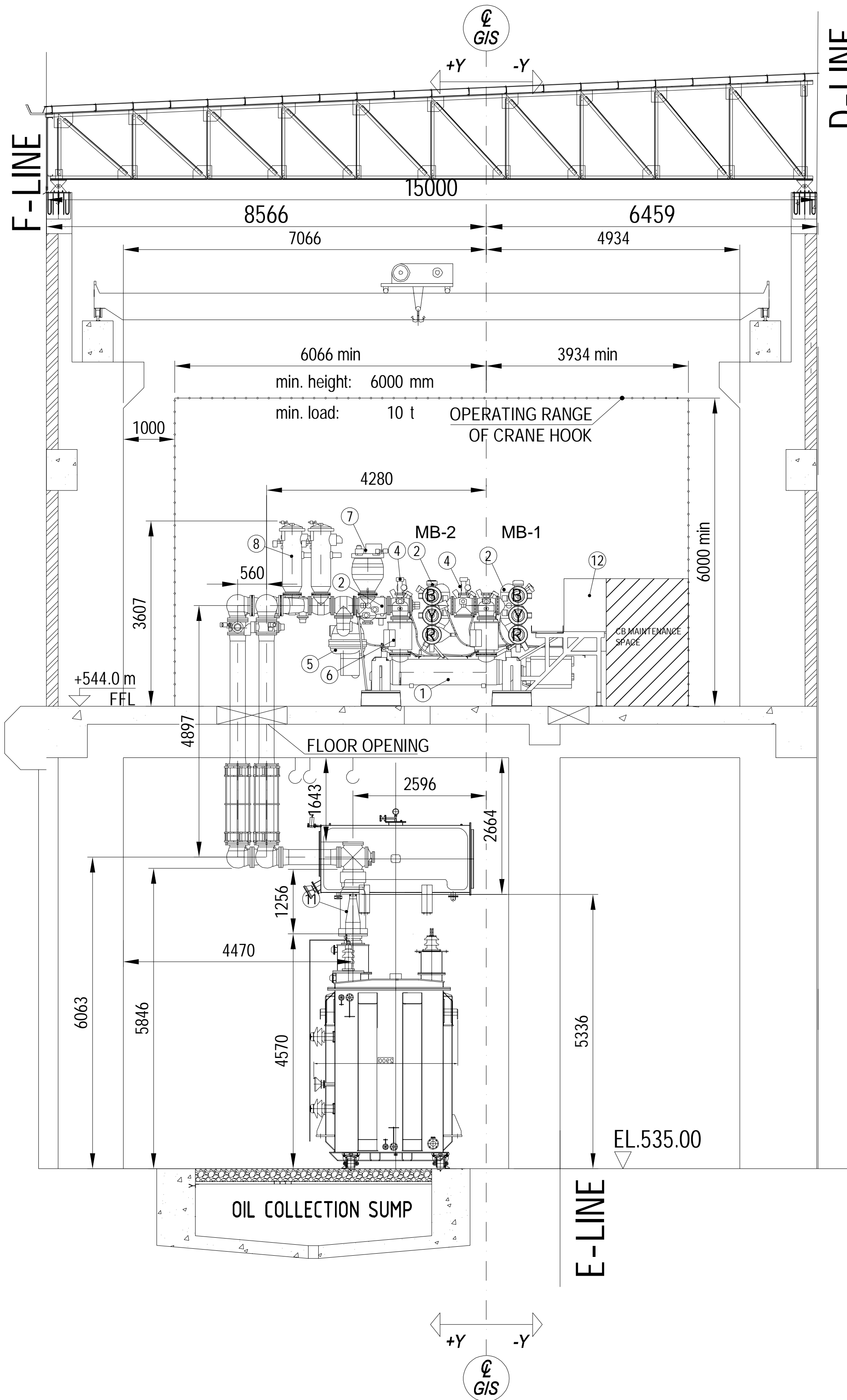
CLIENT:	M/S BHARAT HEAVY ELECTRICAL LIMITED
END CUSTOMER:	UTTARAKHAND JAL VIDHYUT NIGAM LIMITED (UJVNL)
PROJECT:	220 kV GIS for 2 x 60 MW VYASI HEP AT VYASI, DIST DEHRADHUN, UK
NOA No:	136/E & M DESIGN-VVY-EPC(6) (FOR SUPPLY) dt 15.04.2014 & 137/E & M DESIGN-VVY-EPC(6) (FOR SERVICES) dt 15.04.2014
BHEL Doc No:	TB-3-398-316-102

Draft:	06.07.2019	DHRUVI S	Derived from:	-	Separate BOM:	-	Scale:	1:50	Doc type:	DW1	Format:	A0
Approved:	06.07.2019	DEBASISH M	Replaces:	-	SF6 SWITCHGEAR ELK-14 245C	-						
Released:	06.07.2019	DHRUVI S	Responsible department:	PGHV-GIS PASS	220 kV GIS for 2 x 60 MW VYASI HEP	-						
Order number:	3100094055		Revision:	AD	SECTIONS	-						
					GIS LAYOUT & REQUIREMENTS	-						
					Document number:	1HYG900036-2						
					Sheet no:	003						

SECTION C-C (LINE-1 BAY)



SECTION D-D(GT-1 BAY)



EOT Crane Specification (minimum) - Inside GIS Hall	
Capacity	Min 10.0T
Type	RADIO Controlled with remote
HOISIT Lifting Speed	0.315 to 3.15MPM step less speed through VVVF AC Drive
C.T Speed	1.6 to 16 MPM step less speed through VVVF AC Drive
L.T Speed	2 to 20 MPM step less speed through VVVF AC Drive

TRANSFORMER CONNECTION  
INTERFACE ACCORDING IEC 62271-306, 1HC0036270 REV AF

- NOTES
- ALL DIMENSIONS ARE IN MILLIMETRES UNLESS OTHERWISE NOTED.
  - CIVIL DETAILS (DOORS/ STAIRS/ ) AND STEEL STRUCTURE ON THIS DRAWING ARE FOR INFORMATION ONLY. FOR DETAILS REFER TO RELEVANT DRAWINGS.
  - CIVIL CONTRACTOR SHOULD INFORM ABB ABOUT OTHER INSTALLATION (SUCH AS AIR CONDITIONING, LIGHTING, PANELS, ETC) IN GIS HALL, IN ORDER TO AVOID COLLISION WITH GIS/ GIS SUPPORT STRUCTURES.
  - ALL CIRCUIT BREAKERS ARE EQUIPPED WITH 3 DRIVES FOR 3 PHASES.
  - ALL DISCONNECTOR & EARTHING SWITCHES ARE EQUIPPED WITH 1 DRIVE FOR 3 PHASES UNLESS OTHERWISE STATED.
  - EACH GAS COMPARTMENT IS EQUIPPED WITH A GAS VALVE, A DENSITY MONITOR AND A PRESSURE RELIEF DEVICE.
  - ALL THE CIVIL INPUTS PERTAINING TO GIS WILL BE INDICATED IN SEPARATE DRAWING NAMED "CIVIL WORK REQUIREMENTS".
  - ALL THE DETAILS OF THE SUPPORT STRUCTURE & ASSOCIATED FOOTING PERTAINING TO GIS WILL BE INDICATED IN SEPARATE DRAWING NAMED "SUPPORT LAYOUT". HOWEVER FREE SPACE REQUIRED FOR GIS SUPPORT STRUCTURE IS INDICATED IN THE DRAWING AND IT SHOULD BE ENSURED THAT THIS SPACE IS NOT UTILIZED FOR ANY OTHER INSTALLATION.
  - ALL THE DETAILS OF GIS EARTHING & ITS ASSOCIATED STRUCTURE EARTHING WILL BE INDICATED IN SEPARATE DRAWING NAMED "EARTHING LAYOUT".

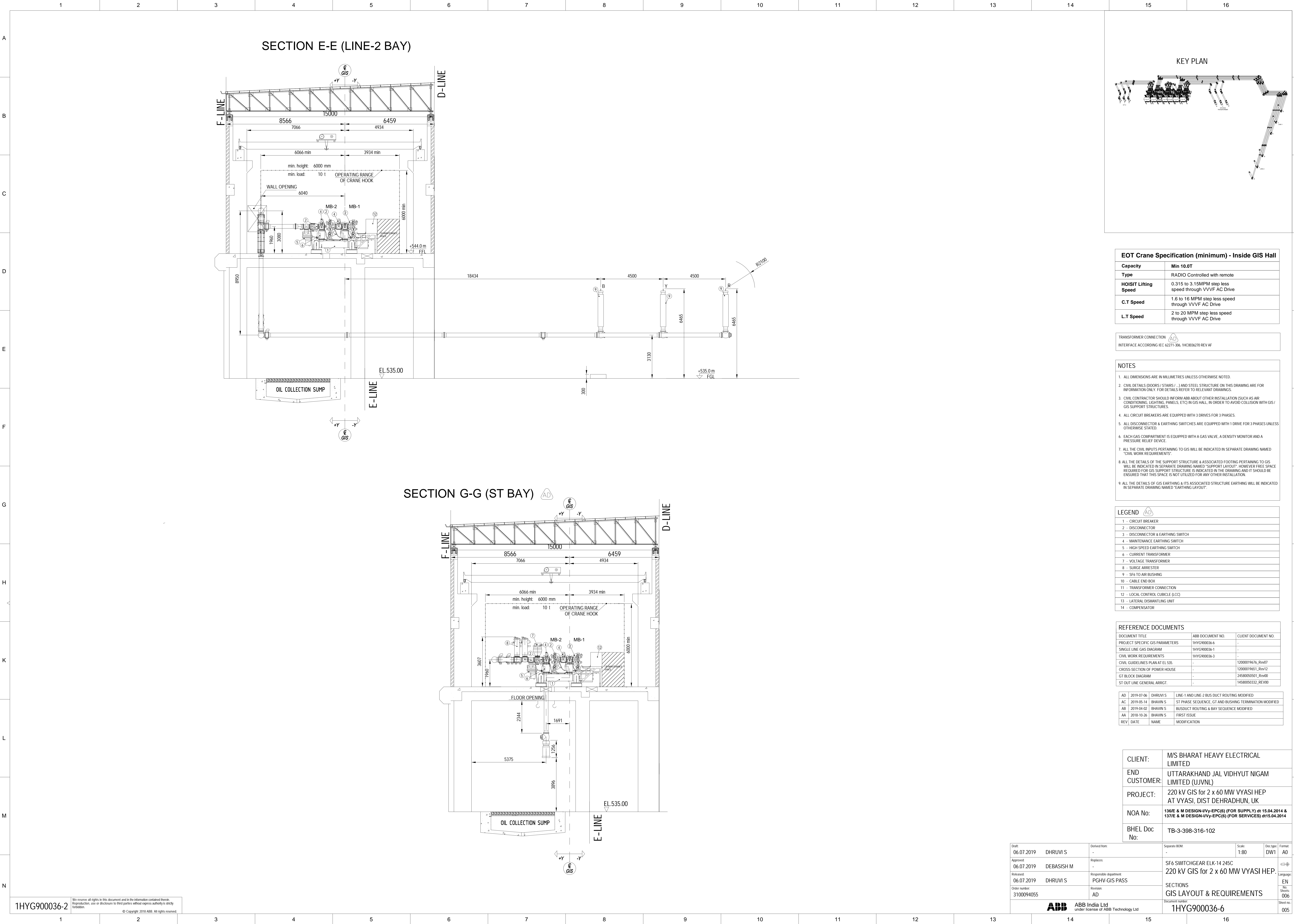
LEGEND	
1 - CIRCUIT BREAKER	
2 - DISCONNECTOR	
3 - DISCONNECTOR & EARTHING SWITCH	
4 - MAINTENANCE EARTHING SWITCH	
5 - HIGH SPEED EARTHING SWITCH	
6 - CURRENT TRANSFORMER	
7 - VOLTAGE TRANSFORMER	
8 - SURGE ARRESTER	
9 - SF6 TO AIR BUSHING	
10 - CABLE END BOX	
11 - TRANSFORMER CONNECTION	
12 - LOCAL CONTROL CUBICLE (LCC)	
13 - LATERAL DISMANTLING UNIT	
14 - COMPENSATOR	

REFERENCE DOCUMENTS		
DOCUMENT TITLE	ABB DOCUMENT NO.	CLIENT DOCUMENT NO.
PROJECT SPECIFIC GIS PARAMETERS	1HYG900036-6	-
SINGLE LINE GAS DIAGRAM	1HYG900036-1	-
CIVIL WORK REQUIREMENTS	1HYG900036-3	-
CIVIL GUIDELINES PLAN AT EL.535.	-	12000019676_Rev07
CROSS-SECTION OF POWER HOUSE	-	12000019651_Rev12
GT BLOCK DIAGRAM	-	24580050501_Rev00
ST OUT LINE GENERAL ARRGT.	-	14580050322_REV00

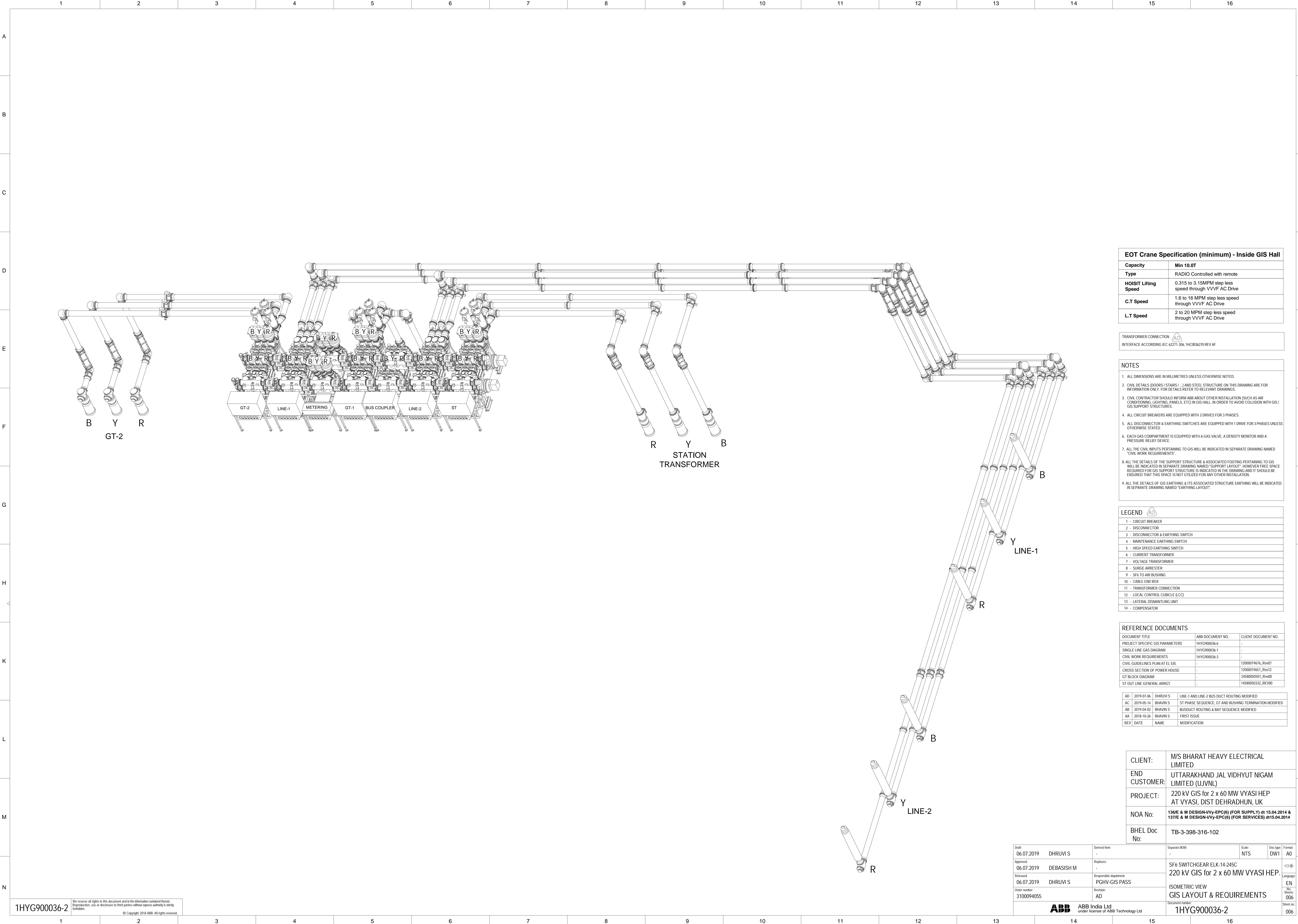
AD	2019-07-06	DHRUVI S	LINE 1 AND LINE 2 BUS DUCT ROUTING MODIFIED
AC	2019-05-14	BHAVIN S	ST PHASE SEQUENCE, GT AND BUSHING TERMINATION MODIFIED
AB	2019-04-02	BHAVIN S	BUSDUCT ROUTING & BAY SEQUENCE MODIFIED
AA	2018-10-26	BHAVIN S	FIRST ISSUE
REV	DATE	NAME	MODIFICATION

CLIENT:	M/S BHARAT HEAVY ELECTRICAL LIMITED
END CUSTOMER:	UTTARAKHAND JAL VIDHYUT NIGAM LIMITED (UJVNL)
PROJECT:	220 kV GIS for 2 x 60 MW VYASI HEP AT VYASI, DIST DEHRADHUN, UK
NOA No:	136/E & M DESIGN-VVyy-EPC(6) (FOR SUPPLY) dt 15.04.2014 & 137/E & M DESIGN-VVyy-EPC(6) (FOR SERVICES) dt 15.04.2014
BHEL Doc No:	TB-3-398-316-102


Draft:	06.07.2019	DHRUVI S	Derived from:	Separate BOM:	Scale:	1:60	Doc type:	DW1	Format:	A0
Approved:	06.07.2019	DEBASISH M	Replaces:	SF6 SWITCHGEAR ELK-14 245C						
Released:	06.07.2019	DHRUVI S	Responsible department:	220 kV GIS for 2 x 60 MW VYASI HEP.						
Order number:	3100094055		Revision:	AD						
				ABB India Ltd						
				under license of ABB Technology Ltd						
				Document number:	1HYG900036-2					
				Sheet no:	004					








EOT Crane Specification (minimum) - Inside GIS Hall	
Capacity	Min 10.0T
Type	RADIO Controlled with remote
HOISIT Lifting Speed	0.315 to 3.15MPM step less speed through VVVF AC Drive
C.T Speed	1.6 to 16 MPM step less speed through VVVF AC Drive
L.T Speed	2 to 20 MPM step less speed through VVVF AC Drive

TRANSFORMER CONNECTION  INTERFACE ACCORDING IEC 62271-306, 1HC0036270 REV AF

- NOTES**
- ALL DIMENSIONS ARE IN MILLIMETRES UNLESS OTHERWISE NOTED.
  - CIVIL DETAILS (DOORS / STAIRS / ) AND STEEL STRUCTURE ON THIS DRAWING ARE FOR INFORMATION ONLY. FOR DETAILS REFER TO RELEVANT DRAWINGS.
  - CIVIL CONTRACTOR SHOULD INFORM ABB ABOUT OTHER INSTALLATION (SUCH AS AIR CONDITIONING, LIGHTING, PANELS, ETC) IN ORDER TO AVOID COLLISION WITH GIS / GIS SUPPORT STRUCTURES.
  - ALL CIRCUIT BREAKERS ARE EQUIPPED WITH 3 DRIVES FOR 3 PHASES.
  - ALL DISCONNECTOR & EARTHING SWITCHES ARE EQUIPPED WITH 1 DRIVE FOR 3 PHASES UNLESS OTHERWISE STATED.
  - EACH GAS COMPARTMENT IS EQUIPPED WITH A GAS VALVE, A DENSITY MONITOR AND A PRESSURE RELIEF DEVICE.
  - ALL THE CIVIL INPUTS PERTAINING TO GIS WILL BE INDICATED IN SEPARATE DRAWING NAMED "CIVIL WORK REQUIREMENTS".
  - ALL THE DETAILS OF THE SUPPORT STRUCTURE & ASSOCIATED FOOTING PERTAINING TO GIS WILL BE INDICATED IN SEPARATE DRAWING NAMED "SUPPORT LAYOUT". HOWEVER FREE SPACE REQUIRED FOR GIS SUPPORT STRUCTURE IS INDICATED IN THE DRAWING AND IT SHOULD BE ENSURED THAT THIS SPACE IS NOT UTILIZED FOR ANY OTHER INSTALLATION.
  - ALL THE DETAILS OF GIS EARTHING & ITS ASSOCIATED STRUCTURE EARTHING WILL BE INDICATED IN SEPARATE DRAWING NAMED "EARTHING LAYOUT".

LEGEND 	
1 - CIRCUIT BREAKER	
2 - DISCONNECTOR	
3 - DISCONNECTOR & EARTHING SWITCH	
4 - MAINTENANCE EARTHING SWITCH	
5 - HIGH SPEED EARTHING SWITCH	
6 - CURRENT TRANSFORMER	
7 - VOLTAGE TRANSFORMER	
8 - SURGE ARRESTER	
9 - SF6 TO AIR BUSHING	
10 - CABLE END BOX	
11 - TRANSFORMER CONNECTION	
12 - LOCAL CONTROL CUBICLE (LCC)	
13 - LATERAL DISMANTLING UNIT	
14 - COMPENSATOR	

REFERENCE DOCUMENTS		
DOCUMENT TITLE	ABB DOCUMENT NO.	CLIENT DOCUMENT NO.
PROJECT SPECIFIC GIS PARAMETERS	1HYG900036-6	-
SINGLE LINE GAS DIAGRAM	1HYG900036-1	-
CIVIL WORK REQUIREMENTS	1HYG900036-3	-
CIVIL GUIDELINES PLAN AT EL 535.	-	12000019676_Rev07
CROSS-SECTION OF POWER HOUSE	-	12000019651_Rev12
GT BLOCK DIAGRAM	-	24580050501_Rev00
ST OUT LINE GENERAL ARRGT.	-	14580050332_REV00

AD	2019-07-06	DHRUVI S	LINE-1 AND LINE-2 BUS DUCT ROUTING MODIFIED
AC	2019-05-14	BHAVIN S	ST PHASE SEQUENCE, GT AND BUSHING TERMINATION MODIFIED
AB	2019-04-02	BHAVIN S	BUSDUCT ROUTING & BAY SEQUENCE MODIFIED
AA	2018-10-26	BHAVIN S	FIRST ISSUE
REV	DATE	NAME	MODIFICATION

CLIENT:	M/S BHARAT HEAVY ELECTRICAL LIMITED
END CUSTOMER:	UTTARAKHAND JAL VIDHYUT NIGAM LIMITED (UJVNL)
PROJECT:	220 kV GIS for 2 x 60 MW VYASI HEP AT VYASI, DIST DEHRADHUN, UK
NOA No:	136/E & M DESIGN-VVyy-EPC(6) (FOR SUPPLY) dt 15.04.2014 & 137/E & M DESIGN-VVyy-EPC(6) (FOR SERVICES) dt 15.04.2014
BHEL Doc No:	TB-3-398-316-102

Draft: 06.07.2019	DHRUVI S	Derived from: -	Scale: Separate BOM: -	Scale: NTS	Doc type: DW1	Format: A0
Approved: 06.07.2019	DEBASISH M	Replaces: -	SF6 SWITCHGEAR ELK-14-245C			
Released: 06.07.2019	DHRUVI S	Responsible department: PGHV-GIS PASS	220 kV GIS for 2 x 60 MW VYASI HEP.			
Order number: 3100094055		Revision: AD	ISOMETRIC VIEW			
			GIS LAYOUT & REQUIREMENTS			
			Document number: 1HYG900036-2			
			Sheet no: 006			